

The Ataman[®] Display Utility User's Manual

Copyright © 2001, Ataman Software, Inc. All rights reserved.

Copying and use of this document and the accompanying software is governed by the terms of the license specified in the file [license.txt](#).

See [Ordering the ADU](#) for ordering information.

1. Overview.....	3
2. Shareware	3
3. Installation and Removal.....	4
4. Registration.....	4
4.1 Ordering Registration Code.....	4
4.2 Using the Registration Code	4
4.2.1 Registration using the right-click menu.....	5
4.2.2 Registration using the command line	5
5. Using the Ataman Display Utility.....	6
5.1 Configuring the ADU.....	6
5.1.1 Configuring the ADU from the Command Prompt.....	7
Tag	8
5.2 Using the ADU	8
6. Troubleshooting / Technical Support.....	8
6.1 Known Issues (Frequently asked questions [FAQ]).....	8
6.1.1 Screen saves, but does not lock under Window 95/98/ME	8
6.1.2 Logoff failed: Incorrect function	9
6.1.3 Power options not working under Windows NT 4.0.	9

[®] Ataman is a registered trademark of Ataman Software, Inc.
All other trademarks herein are trademarks of their respective holders.

6.1.4	Screen saver lock password problem under Windows 95 OSR2.....	9
6.2	Contacting Ataman Software's Technical Support.....	9
6.3	Ataman's World Wide Web Site.....	10

1. Overview

The Ataman Display Utility (ADU) is designed to help those with multiple systems or user accounts to keep track of which system they are currently using. Anyone with multiple machines on their desk or that regularly use multiple machines remotely or attached to a common screen/keyboard/mouse via a switch can appreciate how confusing it can be to keep track of which machine one is currently using. Administrators and developers often use different user accounts for different purposes such as testing. Again, it can be very confusing knowing which user account one is currently accessing. To help with this problem, the ADU displays the current user name and the TCP/IP hostname in the following ways:

- In a screen saver (also used when no one is logged in).
- In a “tool tip” activated by hovering your mouse cursor over an icon in the taskbar.
- (Optionally) In a desktop bitmap that is tiled across the desktop.

Additionally the ADU provides the following benefits:

- The screen saver shows the current date and time in a format large enough to be read across the room.
- The task bar icon can be left-clicked or shift-left-clicked to perform actions such as locking the screen, logging off and invoking screen power management features.

The ADU runs on Windows 95/98/ME, Window NT 4.0 and Windows 2000.

2. Shareware

Ataman markets and distributes the ADU using a method known as **shareware**. The shareware method allows you to review and sample a software product prior to purchase for a limited amount of time. After the time limit (called the evaluation period) expires, you must either purchase the software or stop using it.

This product has a 15-day evaluation period. See the file [license.txt](#) for the full terms of the software license.

Like most shareware vendors, Ataman encourages you to copy and share our software with your friends and associates. Like you, they can decide whether the software meets their needs in a way that justifies its price. However, if the ADU is used after the evaluation period, you are expected to buy it. After payment, you are a **registered user** and will receive a **registration code**.

The registration code deactivates all reminder screens and other forms of reminders. Ataman has designed its registration code with an additional feature: You can use the registration code with future minor revisions of the ADU; only major revisions will require the purchase of a new registration code.

If you have tried the ADU and decided it meets your needs, please see the [Ordering the ADU](#) section to purchase the latest version.

3. Installation and Removal

The ADU is distributed in a self-extracting executable.

Simply run that program (usually called `adusetup.exe`) by double clicking it or starting it from a command prompt. You will be prompted for the necessary information in the standard Windows installation fashion.

You can remove the ADU either by running `adusetup.exe` again, or using the “Add/Remove Programs” Control Panel.

Once you have installed the ADU, you may want to configure it, see [Configuring the ADU](#) for details.

4. Registration

4.1 Ordering Registration Code

After evaluating the Ataman Display Utility (ADU) and finding it meets your needs, you need to purchase a license to continue using the product. Please see the [Ordering the ADU](#) section to purchase the latest version. Once Ataman Software has processed your order, you will receive a **registration code**. This registration code acts as a key to the software. The code notifies the software that you are a registered user and disables the payment reminders and other reminder features. These reminder features insure that evaluating users do not use the software beyond the evaluation period.


One nice feature of the ADU is that future minor revisions of the ADU use the same registration code. Only major revisions will require purchase of a new registration code. A major product revision adds significant new features to the product; a minor revision generally contains fixes and minor enhancements.

Registration codes are tied to the name of the registered user and cause the product to list that user as the proper licensee of the product. You should never share your registration code with another user, as your name must appear as the licensee of that copy in order for the registration code to work.

4.2 Using the Registration Code

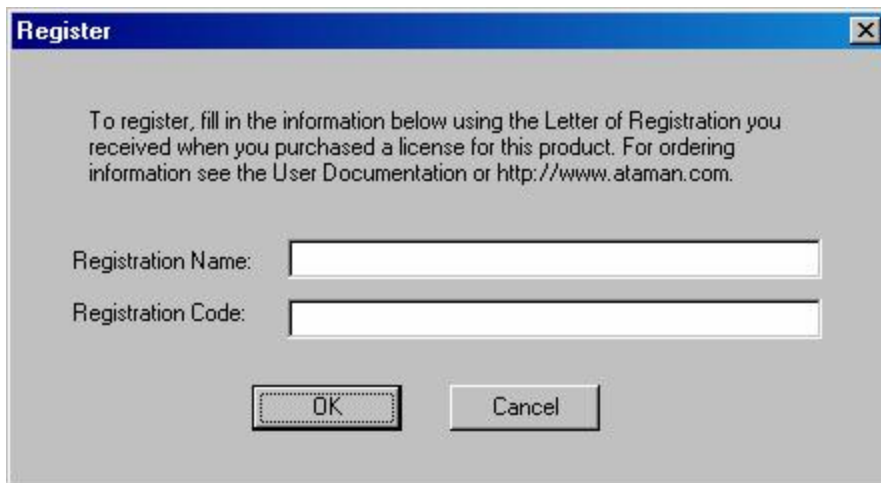
First, install the ADU using the [Installation and Removal](#) section above. You may use either the ADU right-click menu or the command line program to apply your registration code to the ADU software.

4.2.1 Registration using the right-click menu

Once the ADU is installed you will see:  on your taskbar. Right-click the mouse over this icon and you will get a pop-up menu:



Select the “Register...” menu item. (If it is disabled (gray), then this product has already been registered, selected the “About...” option for more information.)



Fill in the information from the “Letter of Registration” you received when you purchased a product license. Click the “OK” button. Be sure the “Registration Name” is spelled as shown in the Letter of Registration. The spelling must be exact since the Registration Code is tied to the Registration Name. If a mistake in the spelling of the Registration Name has occurred contact Ataman Software’s Technical Support and a new code will be issued.

Be sure to save your registration information. You will need it when you reinstall the software.

4.2.2 Registration using the command line


Alternatively, you can use a command line program to do the registration. This is useful if you want to automate the registration process using “.CMD” files. In the directory where you installed the ADU (probably C:\Program Files\Ataman Display Utility), you will find a program called `register.exe`.

Retrieve the “Registration Code” and “Registration Name” from the “Letter of Registration” you received when purchasing the product license. The Letter of Registration arrived with your diskette. To use `register.exe`, start a command prompt and issue the following command using the information from the Letter of Registration.

```
register Registration_Code "Registration_Name"
```

The two quotes (") above must be used if the name of the registered user is more than one word. You should replace *Registration_Name* with the name listed beside the “Registration Name:” entry in the registration letter and replace *Registration_Code* with the code listed beside the “Registration Code:” entry. (Typically *Registration_Name* will be either your name or your company’s name.)

5. Using the Ataman Display Utility

Once the ADU is installed you will see:  on your taskbar. All interaction with the ADU is done using this icon. First you will probably want to configure the ADU. To do this, move your mouse over the icon and right-click:



Select the “Configure...” menu item and proceed to the next section.

5.1 Configuring the ADU

Using the right click described above, bring up the ADU configure dialog:



Configuration of the ADU is straightforward. Check the “Generate” box if you want the bitmap generated for the desktop background, uncheck it otherwise.

For both a left-click and a shift-left-click of the ADU icon, a set of actions can be invoked.

For each click, you can have one Workstation option and one Power Management option.

Please note that the power management option will only be effective if your operating system actually supports it for your hardware. Windows NT 4.0 does not have power management. Windows 95 has power management, but internally, we have found it does not work well and we generally just disable it.

5.1.1 Configuring the ADU from the Command Prompt

To aid in use of the ADU from user logon scripts and automated installation setups, the ADU comes with a command line based program for configuration called: `aducfg.exe`. One helpful option is “dump” which will give you a series of `aducfg` commands that will reproduce the current configuration. Thus:

```
aducfg dump >doaduconfig.cmd
```

will create a script file containing something like:


```
aducfg GenerateBackground 1
aducfg LeftPowerAction 0
aducfg LeftWorkstationAction 1
aducfg ShiftLeftPowerAction 0
aducfg ShiftLeftWorkstationAction 2
```

The series of commands will reproduce the current ADU configuration on other systems.

The table below describes the meanings of the various configuration tags.

Tag	Description and Values
GenerateBackground	Set to 1 if you want the username/hostname generated as the desktop background bitmap, 0 otherwise.
LeftPowerAction	Power action to fire when user left-clicks the ADU icon. 1 – Display goes to Low Power. 2 – Display is shut off. 0 – No power action.
LeftWorkstationAction	Workstation action to fire when user left-clicks the ADU icon. 1 – Lock screen. 2 – Log off. 0 – No workstation action
ShiftLeftPowerAction	Power action to fire when user shift-left-clicks the ADU icon. 1 – Display goes to Low Power. 2 – Display is shut off. 0 – No power action.
ShiftLeftWorkstationAction	Workstation action to fire when user shift-left-clicks the ADU icon. 1 – Lock screen. 2 – Log off. 0 – No workstation action

5.2 Using the ADU

By default, left clicking the ADU icon:  on your taskbar will lock your screen. Shift-left clicking on the icon will log you off. To change this behavior see: [Configuring the ADU](#).

6. Troubleshooting / Technical Support

6.1 Known Issues (Frequently asked questions [FAQ])

6.1.1 Screen saves, but does not lock under Window 95/98/ME

You must set the screen saver password before screen locking can work.

1. Right click on the desktop and select “Properties”.
2. Click the “Screen Saver” tab.
3. Check the “Password protected” box.

4. Press the “Change” button.
5. Type your desired password twice and press “OK”.
6. Uncheck the “Password protected” box (if you don’t want it to automatically lock).
7. Press the “OK” button.

6.1.2 Logoff failed: Incorrect function

Windows 95/98/ME systems do not necessarily have you “logon” depending on your network options. If you have not “logged on” and attempt to “logoff”, you will get this error message.

6.1.3 Power options not working under Windows NT 4.0.

Windows NT 4.0 does not have power management support in the operating system.

6.1.4 Screen saver lock password problem under Windows 95 OSR2

Immediately after invoking the screen saver on Windows 95 OSR2, the system continually deselects the “Windows Screen Saver” password box for about 15-20 seconds. We do not know why this occurs. Everything appears to be fine after those several seconds. This appears to be a bug in Windows 95 OSR2 in processing the WM_SYSCOMMAND window message that invokes the screen saver.

6.2 Contacting Ataman Software’s Technical Support

Free technical support is provided exclusively via electronic mail. From the Internet use:
support@ataman.com.

IMPORTANT: Our biggest problem in providing technical support via electronic mail is receiving invalid return addresses. If your local mailing system does not automatically provide it, please give a standard return address as part of your message. In all cases, please list your telephone number so we can still reach you in the event of electronic mail failure.

Ataman Software takes its technical support by electronic mail very seriously. Under normal circumstances, we check for mail several times each day. While the turnaround time will of course vary due to the speed of your local mail handling, Ataman’s Internet provider is well placed on the Internet. It should be a very rare event not to respond to your mail within 1 business day. If you have not received a response within this time period, please tell us calling us at (970) 225-9131.

Contact Information:

support@ataman.com
Ataman Software, Inc.
P.O. Box 271130
Fort Collins, CO 80527

(970) 225-9131
FAX: (970) 225-0335

Bug fixes are worked into minor releases that are distributed on our world-wide web site:

<http://www.ataman.com>

You may also obtain the latest version from Ataman Software for a distribution fee. You only need to obtain one copy to upgrade all the copies for which you have a license. You may share the upgrade with other registered users. Your registration code will work with all minor version releases that have the same major version number as the software you originally licensed.

Only the latest major release version is eligible for full technical support. When a new major version is released, support for the old version will be phased out over a 6-month period.

We reserve the right to charge for technical support for copies purchased 1 year or more earlier.

6.3 Ataman's World Wide Web Site

Not sure if you have the latest version? Want to know about useful freebies?

Check out our World-Wide-Web site:

<http://www.ataman.com>

